

www.  
**socage**  
.it

POCKET  
2016

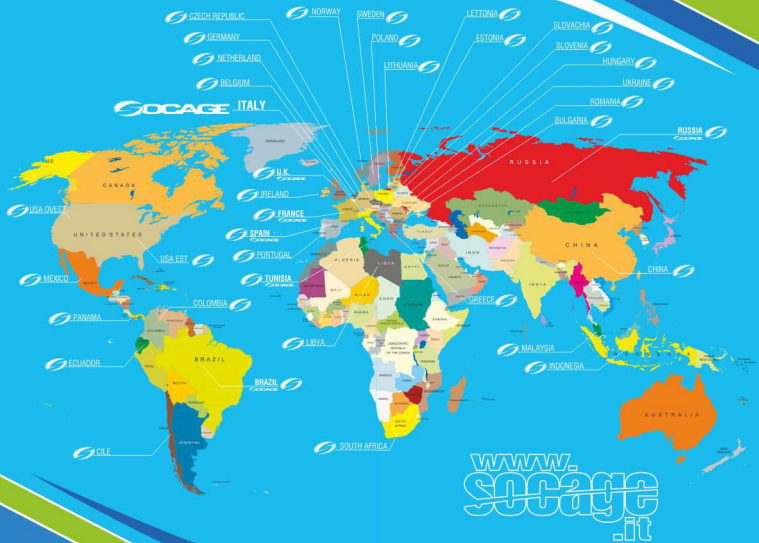
massimodallosta.com

SOCAGE S.r.l.  
Strada Statale S.S. 12 n. 10  
41030 - Sorbara di Bomporto (MO) ITALY  
Tel. +39 059 9121211 - Fax +39 059 907304 - info@socage.it



**SOCAGE**

2016



www.  
sogage  
.it

**SOGAGE**

IN THE WORLD

# INDEX

for **30A** for **32A** for **35A** 2/7

**40U** 8/9

**0A8-20 0A8-21 0A8-20** 10/15

**0A8-15 0A8-19 0A8-20** 16/21

**0A9-20 0A9-22 0A9-20** 22/27

**0Q15 0Q16 0Q18 0Q20** 28/35

for the **3FDJ** for the **3FDJ** 36/39

for **12VT** for **15VD** 40/43

**20W 250 24W 280** 44/51

**16T 20T 20W 23T** 52/59

**40815** 60/61

**35U** 62/63

**35UW** 64/65

**24U** 66/69

**20UW** 70/73

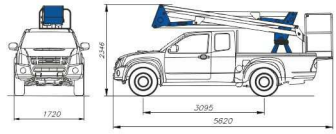
**30U** 74/75

**34UW** 76/79

for the **30UW** 80/81

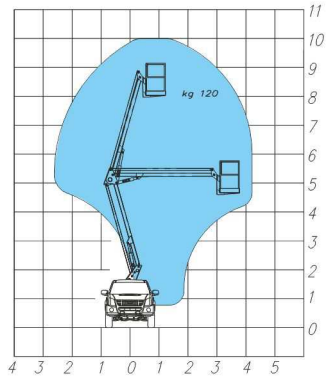
for the **75UW** 82/83

**GOCAGE**



PTT 2,9 t

www.socage.it



10,00 m



8,00 m



4,20 m



120 kg



350°



70x70x110  
140x70x110\*



aluminium



0°



no

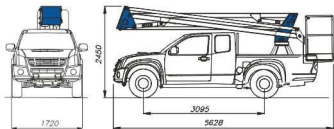


electrical



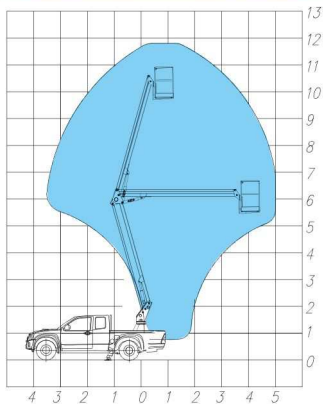
\*optional





PTT 2,9 t

www.  
socage  
.it



for Ste **PA**

11,90 m



9,90 m



5,00 m



120 kg



350°



70x70x110  
140x70x110\*



aluminium



0°



no



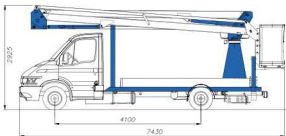
electrical



\*optional



**SOCAGE**

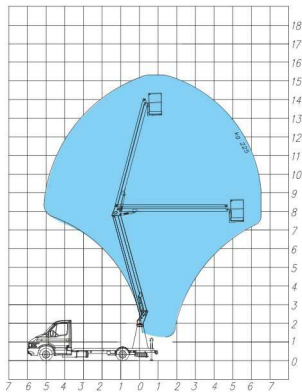


6/7



PTT 3,5 t

www.socage.it



for Ste **SA**

15,30 m



13,30 m



6,50 m



120 kg



350°



70x70x110  
140x70x110\*



aluminium



0°



H



electrical



\*optional



**SOCAGE**



8/9

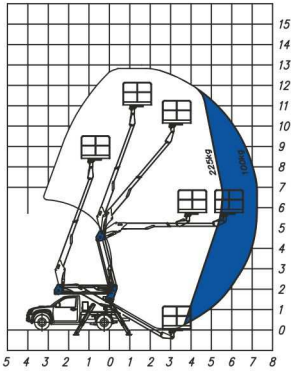
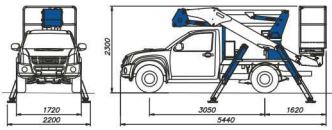
pick up



PTT 2,9 t

www.socage.it

# A314



13,20 m

11,20 m

7,20 m

225 kg

270°

140x70x110

aluminium

0°

A+A

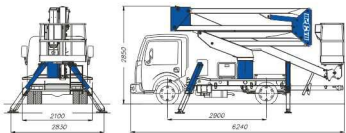
hydraulic

\*optional



# SOCAGE





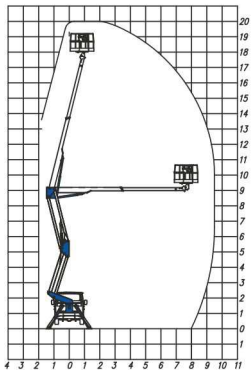
10/11



PTT 3,5 t

www.socrage.it

**DA320**  
T8510



20,00 m



18,00m



9,50 m



225 kg



∞



140x70x110



aluminium



90° + 90°



A+A



hydraulic

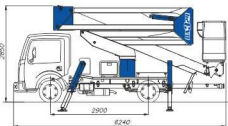


\*optional



**SOCRAGE**



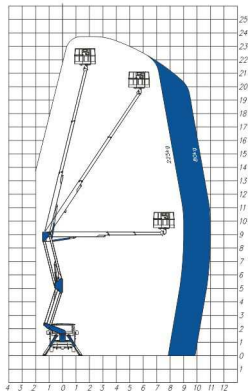


12/13



PTT 3,5 t

www.socage.it



# DA324

24,00 m



22,00m



11,00 m



225 kg



∞



140x70x110



aluminium



90° + 90°



A+A



hydraulic



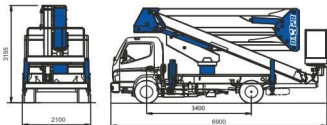
\*optional



# SOCAGE

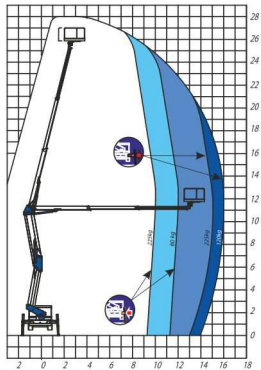


14/15



PTT 5,6 t

www.socage.it



**DA328**  
PTT 5,6 t

28,00 m



26,00m



16,00 m



225 kg



∞



180x70x110



aluminium



90° + 90°



HE+HE



electrical



\*optional



**SOCAGE**





16/17



PTT 3,5 t

www.sorage.it

**T315**  
T3150

14,50 m



12,50m



9,10 m



225 kg



∞



140x70x110



aluminium



90° + 90°



A+H



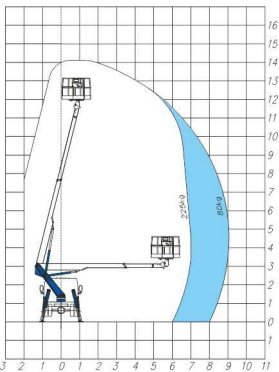
hydraulic

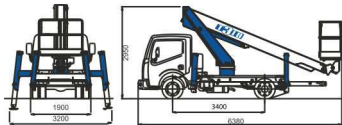


\*optional



**SORAGE**



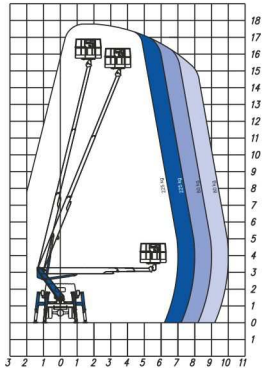


18/19



PTT 3,5 t

www.  
socage  
.it



**T318**  
T318

18,00 m



16,00m



10,00 m



225 kg



∞



140x70x110



aluminium



90° + 90°



ME+H



hydraulic



\*optional



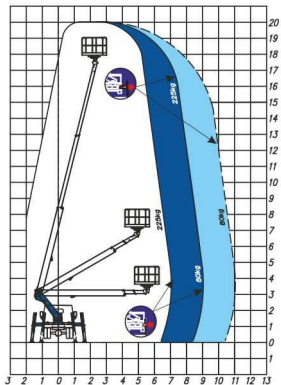
**SOCAGE**

20/21



PTT 3,5 t

www.socage.it



T320  
W350

20,00 m



18,00m



11,00 m



225 kg



∞



140x70x110



aluminium



90° + 90°



ME+H



hydraulic

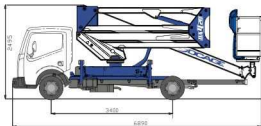


\*optional



SOCAGE

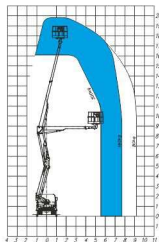
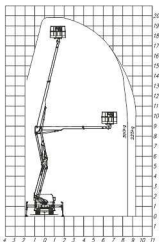




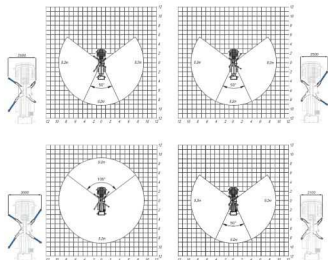
PTT 3,5 t

maximum

minimum

www.  
socage  
.it

X FACTOR



20,00 m



18,00 m



9,50 m



300 kg



700°



140x70x110



aluminium



90° + 90°



ME+ME



hydraulic



\*optional



SOCAGE

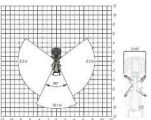
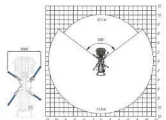
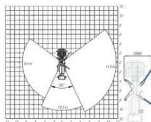
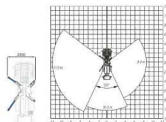
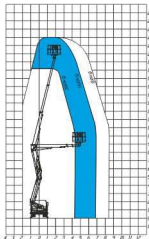
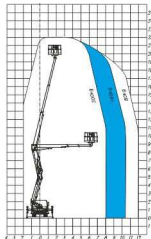


PTT 3,5 t

[www.sORAGE.it](http://www.sORAGE.it)
X<sub>FACTOR</sub>

maximum

minimum

DA 422  
for S16

22,00 m



20,00m



12,00 m



300 kg



700°



140x70x110



aluminium



90° + 90°



ME + ME



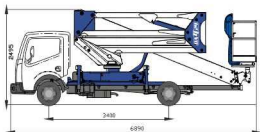
hydraulic



\*optional



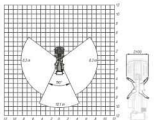
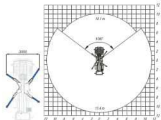
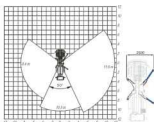
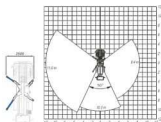
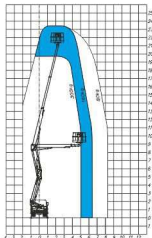
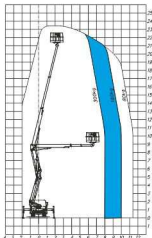
SORAGE



PTT 3,5 t

maximum

minimum



www.  
**SOCAGE**  
.it

**X**FACTOR

24,00 m



22,00m



11,50 m



300 kg



700°



140x70x110



aluminium



90° + 90°



ME + ME



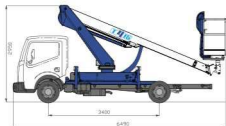
hydraulic



\*optional



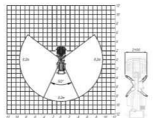
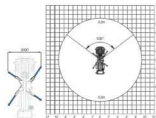
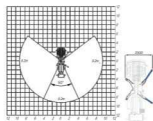
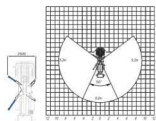
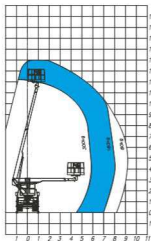
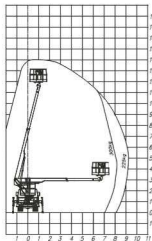




PTT 3,5 t

maximum

minimum


**T415**  
*for SORA*

14,50 m



12,50m



9,50 m



300 kg



700°



140x70x110



aluminium



90° + 90°



ME + ME



hydraulic



\*optional

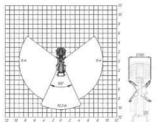
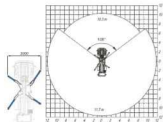
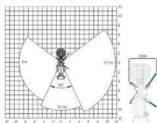
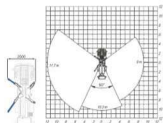
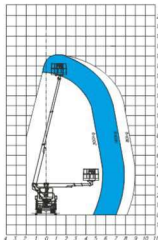
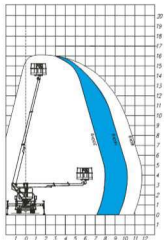

**SORAGE**



PTT 3,5 t

maximum

minimum


[www.socage.it](http://www.socage.it)

X FACTOR

**T416**  
*for STE*

16,10 m



14,10m



12,00 m



300 kg



700°



140x70x110



aluminium



90° + 90°



ME + ME

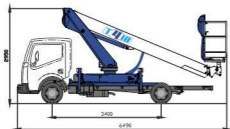


hydraulic



\*optional

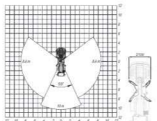
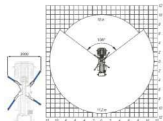
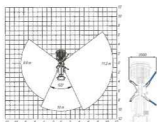
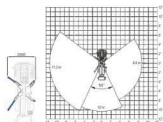
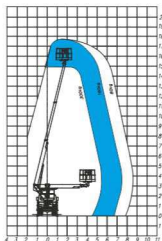
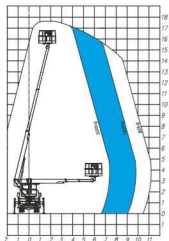

**SOCAGE**



PTT 3,5 t

maximum

minimum



www.  
socage  
.it

X  
FACTOR

T418  
for SCS

18,00 m



16,00m



11,50 m



300 kg



700°



140x70x110



aluminium



90° + 90°



ME + ME



hydraulic



\*optional

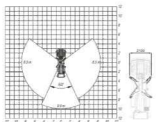
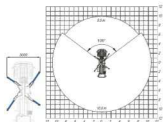
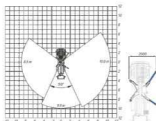
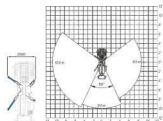
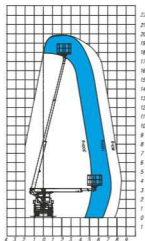
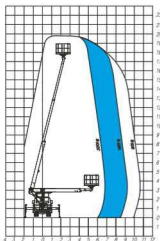


SOCAGE



maximum

minimum



PTT 3,5 t

[www.socage.it](http://www.socage.it)

X FACTOR

**T420**  
*for STs*

20,00 m



18,00m



11,00 m



300 kg



700°



140x70x110



aluminium



90° + 90°



ME + ME

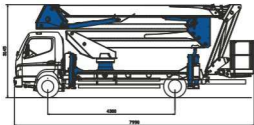


hydraulic

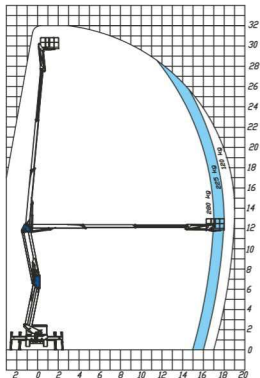


\*optional


**SOCAGE**



PTT 7,5 t

[www.socage.it](http://www.socage.it)


32,00 m



30,00m



19,00 m



280 kg



700°



180x70x110



aluminium



90° + 90°



HE + HE

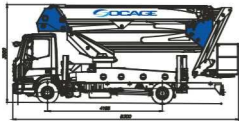


electrical

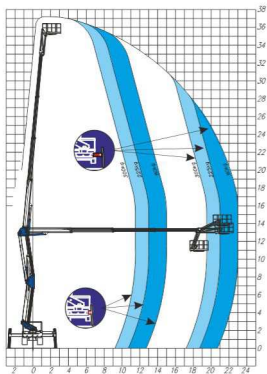


\*optional


**SOCAGE**



PTT 12 t

[www.sORAGE.it](http://www.sORAGE.it)

*for Sale*  
**37/39**

37,30 m



35,30m



23,00 m



300 kg



700°



200x80x110



aluminium



90° + 90°



HE + HE



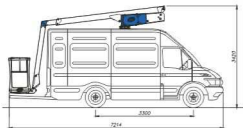
electrical



\*optional


**SORAGE**

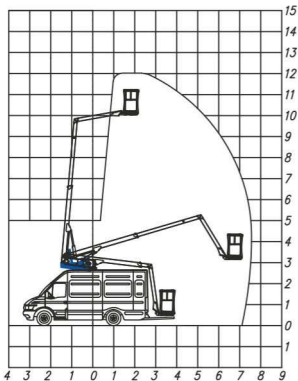

40/41



PTT 3,5 t

www.socage.it

forSt 12VT



12,00 m



10,00m



7,50 m



120 kg



400°



70x70x110



fiberglass



0°



no



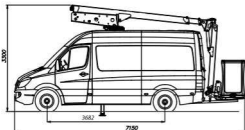
electrical



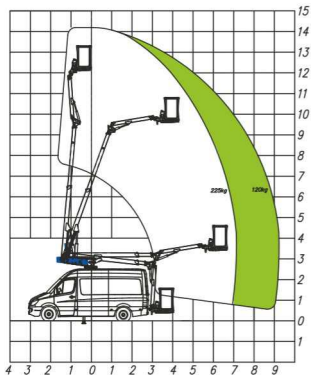
\*optional



SOCAGE



PTT 3,5 t

[www.socage.it](http://www.socage.it)
for 3c **15VUJ**

14,50 m



12,50m



9,50 m



120 kg



400°



70x70x110



fiberglass



0°



A



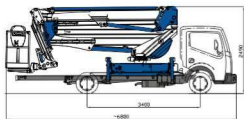
electrical



\*optional


**SOCAGE**

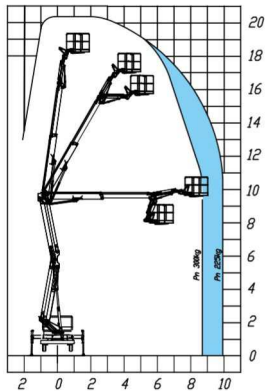




PTT 3,5 t

www.  
sorage.it

X-FACTOR



21DJ

20,50 m



18,50m



10,00 m



300 kg



700°



140x70x110



aluminium



90° + 90°



ME + ME



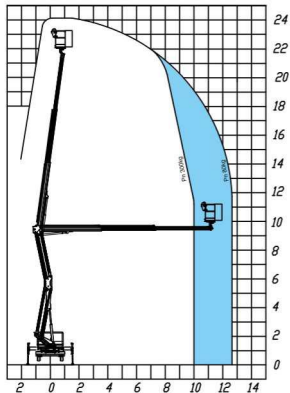
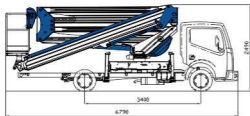
electrical



\*optional



SORAGE



PTT 3,5 t

www.  
socage.it

X-FACTOR

250

24,50 m



22,50m



12,70 m



300 kg



700°



140x70x110



aluminium



90° + 90°



ME + ME



electrical

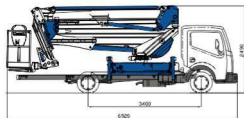


\*optional



SOCAGE



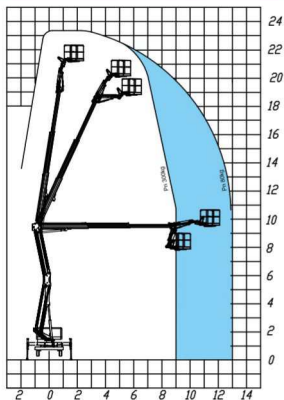


PTT 3,5 t

www.sorage.it

X FACTOR

24 DJ



23,50 m



21,50m



13,00 m



300 kg



700°



140x70x110



aluminium



90° + 90°



ME + ME



electrical

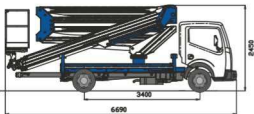


\*optional



SORAGE

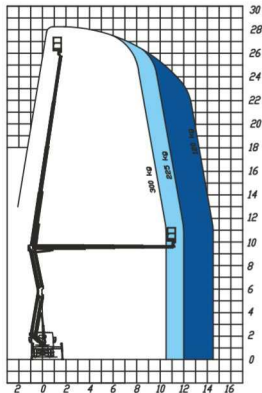
50/51



PTT 3,5 t

www.socage.it

X-FACTOR



28 D

28,00 m



26,00m



14,50 m



300 kg



700°



140x70x110



aluminium



90° + 90°



ME + ME



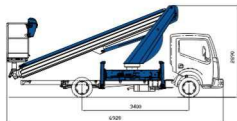
electrical



\*optional



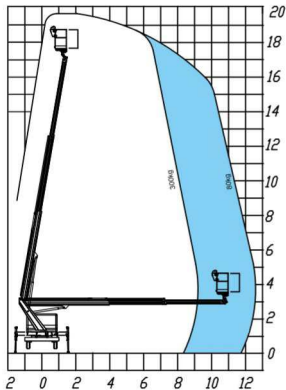
SOCAGE



PTT 3,5 t

WWW.  
SOCAGE  
.IT

X  
FACTOR



20  
TE

19,50 m



17,50m



12,50 m



300 kg



700°



140x70x110



aluminium



90° + 90°



ME + ME



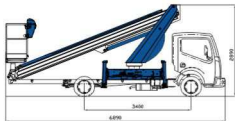
electrical



\*optional



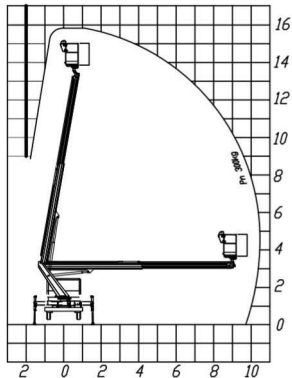
SOCAGE



PTT 3,5 t

www.  
socage  
.it

X  
FACTOR



16  
T  
E

16,00 m



14,00m



10,50 m



300 kg



700°



140x70x110



aluminium



90° + 90°



ME + ME



electrical



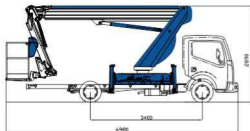
\*optional



SOCAGE

56/57

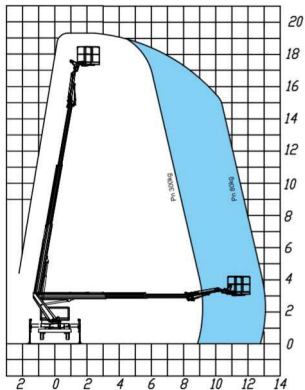
for 20 **TJ**



PTT 3,5 t

www.  
**SOCAGE**  
.it

**X**FACTOR



19,50 m



17,50m



13,50 m



300 kg



700°



140x70x110



aluminium



90° + 90°



ME + ME



electrical

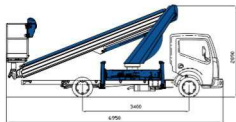


\*optional



**SOCAGE**

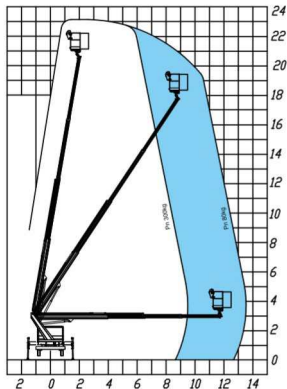
58/59



PTT 3,5 t

www.sorage.it

X-FACTOR



23T<sub>E</sub>

23,10 m



21,10m



13,50 m



300 kg



700°



140x70x110



aluminium



90° + 90°



ME + ME



electrical



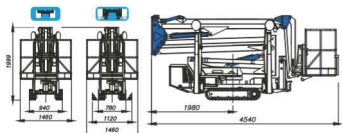
\*optional



SORAGE







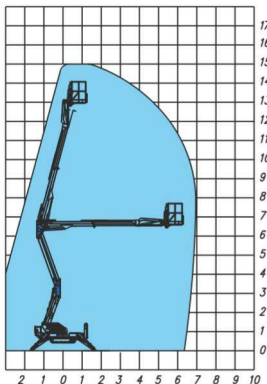
60/61

**SPJ315**



1,9 t

www.  
**socage**  
.it



15,00 m



13,00m



7,00 m



225 kg



350°



140x70x110



aluminium



0°



Z+Z



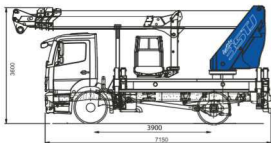
hydraulic



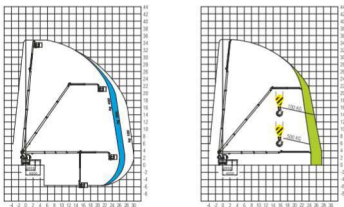
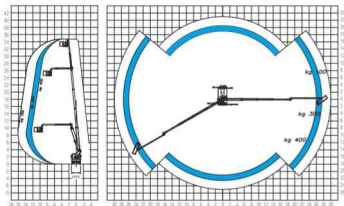
\*optional



**SOCAGE**



PTT 18 t

[www.socage.it](http://www.socage.it)


35,00 m



33,00m



30,00 m



400 kg



700°

230x90x110  
330x90x110

aluminium



360°



HE + HE

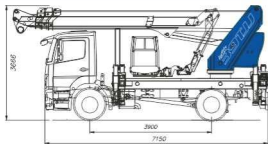


electrical

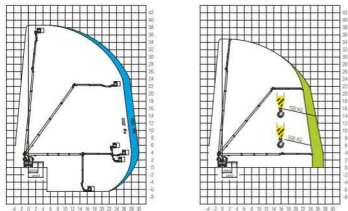
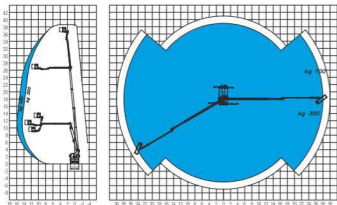


500 kg


**SOCAGE**



PTT 18 t

[www.socage.it](http://www.socage.it)


39,00 m



37,00m



30,00 m



300 kg



700°

230x90x110  
330x90x110

aluminium



360°



HE + HE

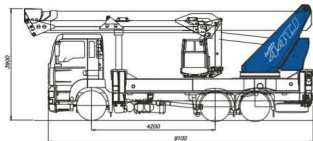


electrical



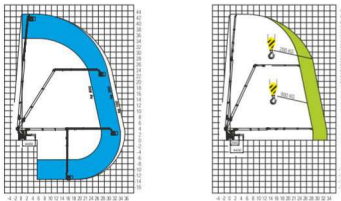
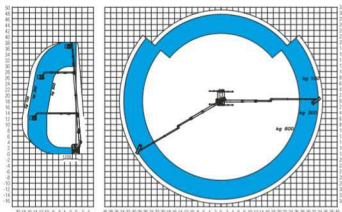
500 kg


**SOCAGE**



PTT 26 t

www.  
**sogage**  
.it



44,00 m



42,00m



35,00 m



600 kg



700°

230x90x110  
360x90x110

aluminium



360°



HE + HE



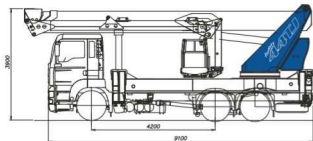
electrical



900 kg

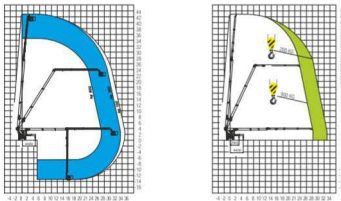
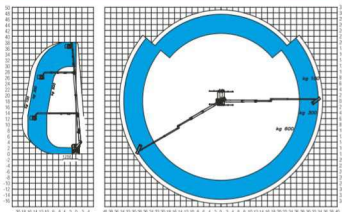


**SOGAGE**



PTT 26 t

www.  
**sogage**  
.it



44,00 m



42,00m



35,00 m



600 kg



700°

230x90x110  
360x90x110

aluminium



360°



HE + HE



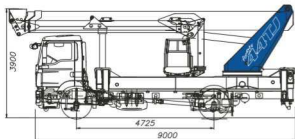
electrical



900 kg

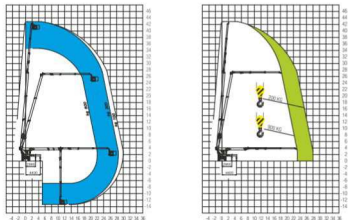
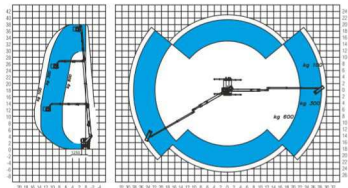


**SOGAGE**



PTT 18 t

www.  
**SORAGE**  
.it



44,00 m



42,00m



30,00 m



600 kg



700°

230x90x110  
360x90x110

aluminium



360°



HE + HE



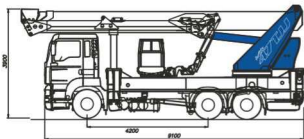
electrical



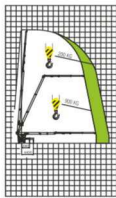
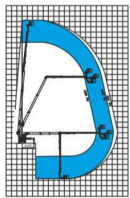
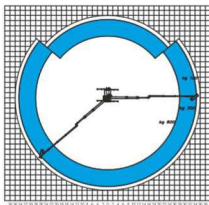
900 kg



72/73



PTT 26 t

[www.sogage.it](http://www.sogage.it)

*for site*  
**47TU**

47,00 m



45,00m



36,00 m



600 kg



700°



230x90x110

360x90x110



aluminium



360°



HE + HE



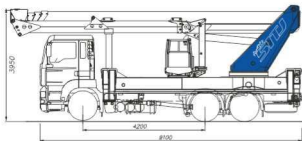
electrical



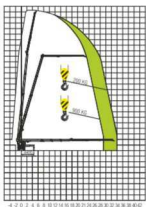
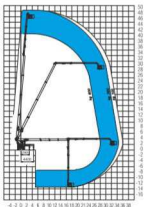
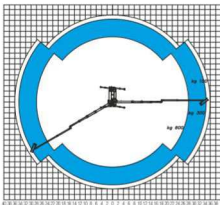
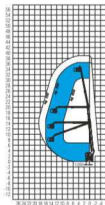
900 kg



74/75



PTT 26 t

[www.socage.it](http://www.socage.it)

*for sale*  
**SITU**

51,00 m



49,00m



36,00 m



600 kg



700°



230x90x110

360x90x110



aluminium



360°



HE + HE



electrical

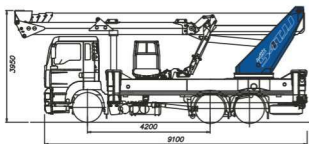


900 kg

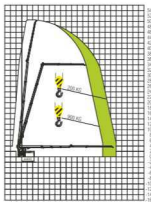
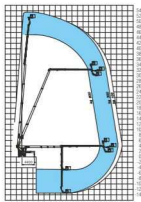
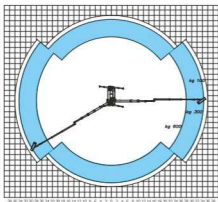
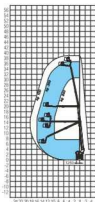

**SOCAGE**



76/77



PTT 26 t

[www.sorage.it](http://www.sorage.it)
*for sale*  
**54TJJ**


54,00 m



52,00m



36,00 m



600 kg



700°



230x90x110

360x90x110



aluminium



360°



HE + HE



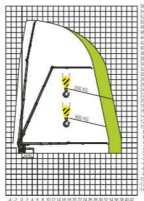
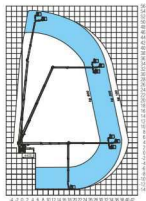
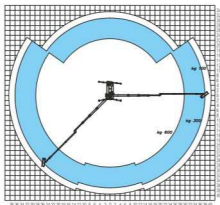
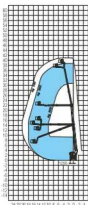
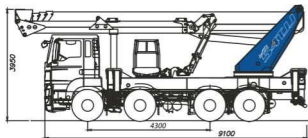
electrical



900 kg


**SORAGE**

78/79



PTT 32 t

[www.sogage.it](http://www.sogage.it)
*for City*  
**54TUJ**

54,00 m



52,00m



40,00 m



600 kg



700°

230x90x110  
360x90x110

aluminium



360°



HE + HE

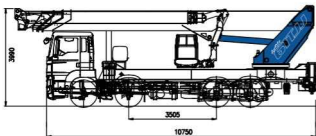


electrical



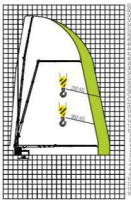
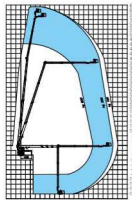
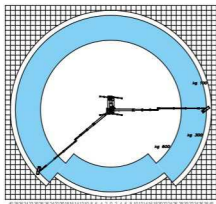
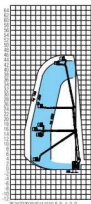
900 kg





PTT 32 t

www.  
**SORAGE**  
.it



61,00 m



59,00m



40,00 m



600 kg



700°

230x90x110  
360x90x110

aluminium



360°



HE + HE

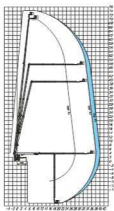
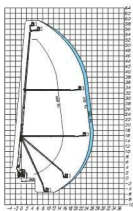
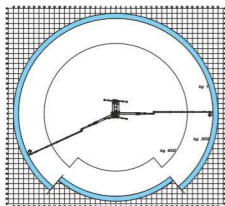
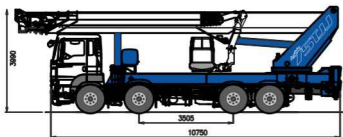


electrical



900 kg





PTT 32 t

FREE CIRCULATION

[www.socage.it](http://www.socage.it)

75,00 m



73,00m



40,00 m



600 kg



700°

230x90x110  
360x90x110

aluminium



360°



HE + HE



electrical



900 kg

